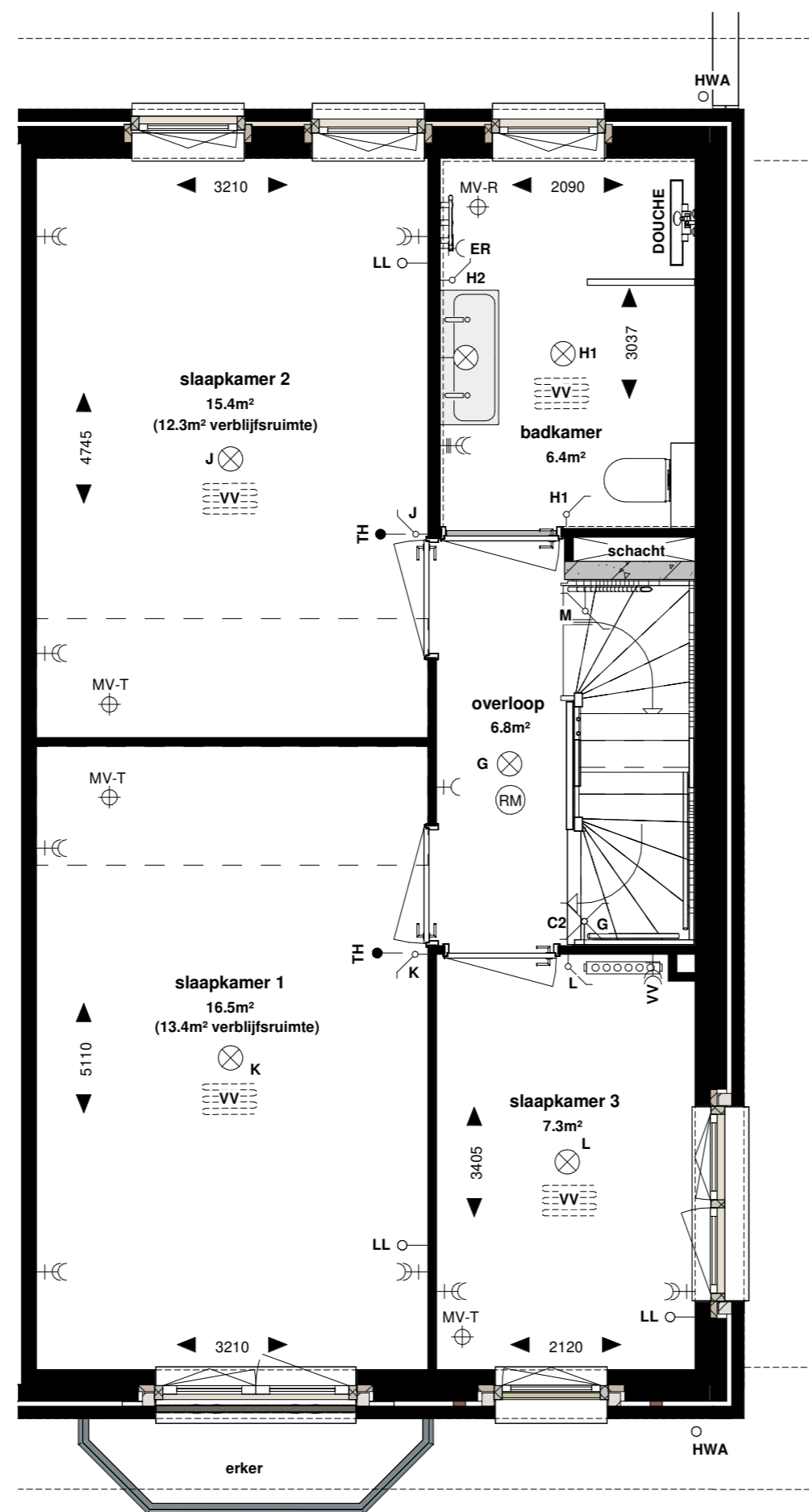
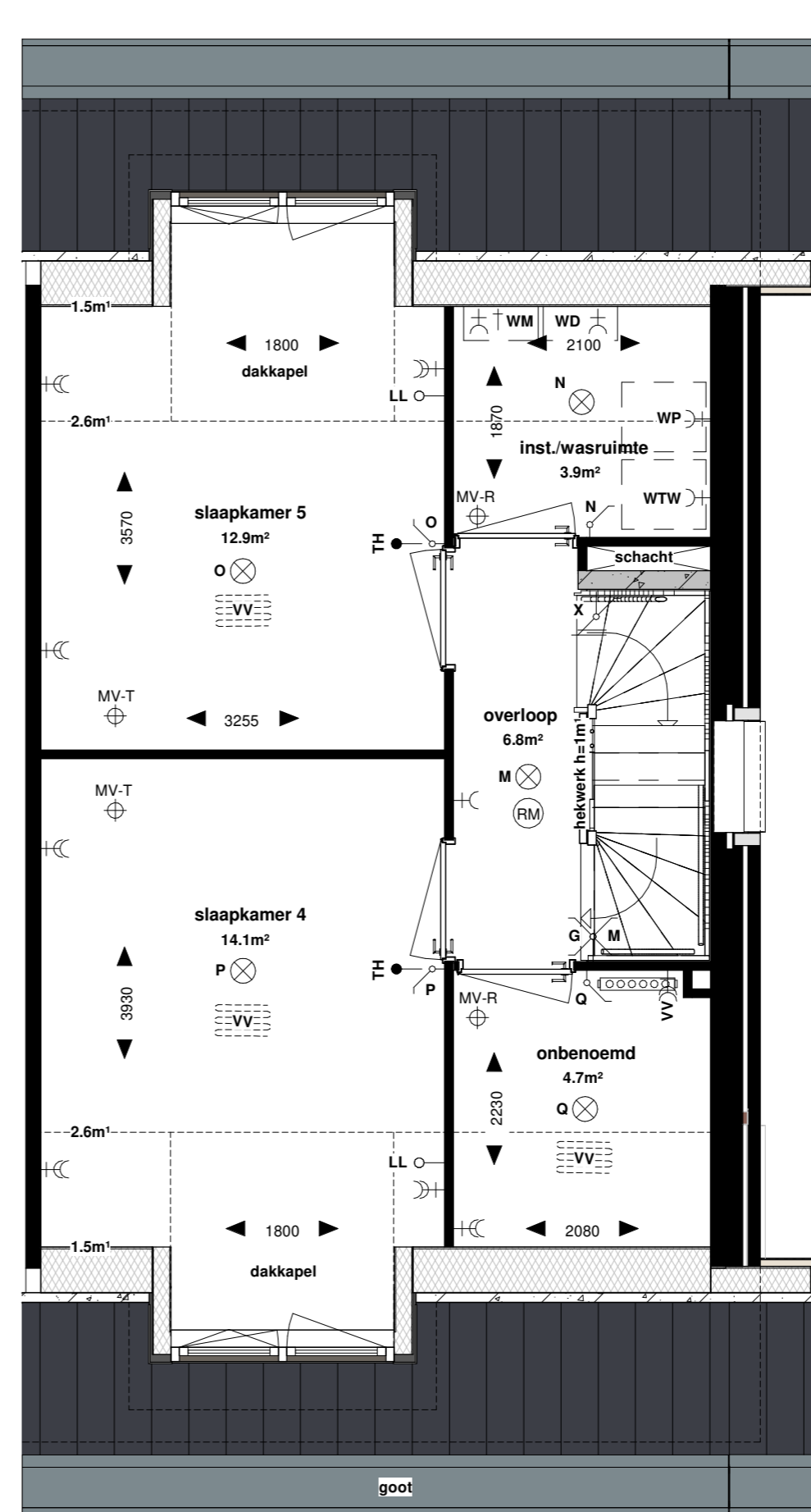


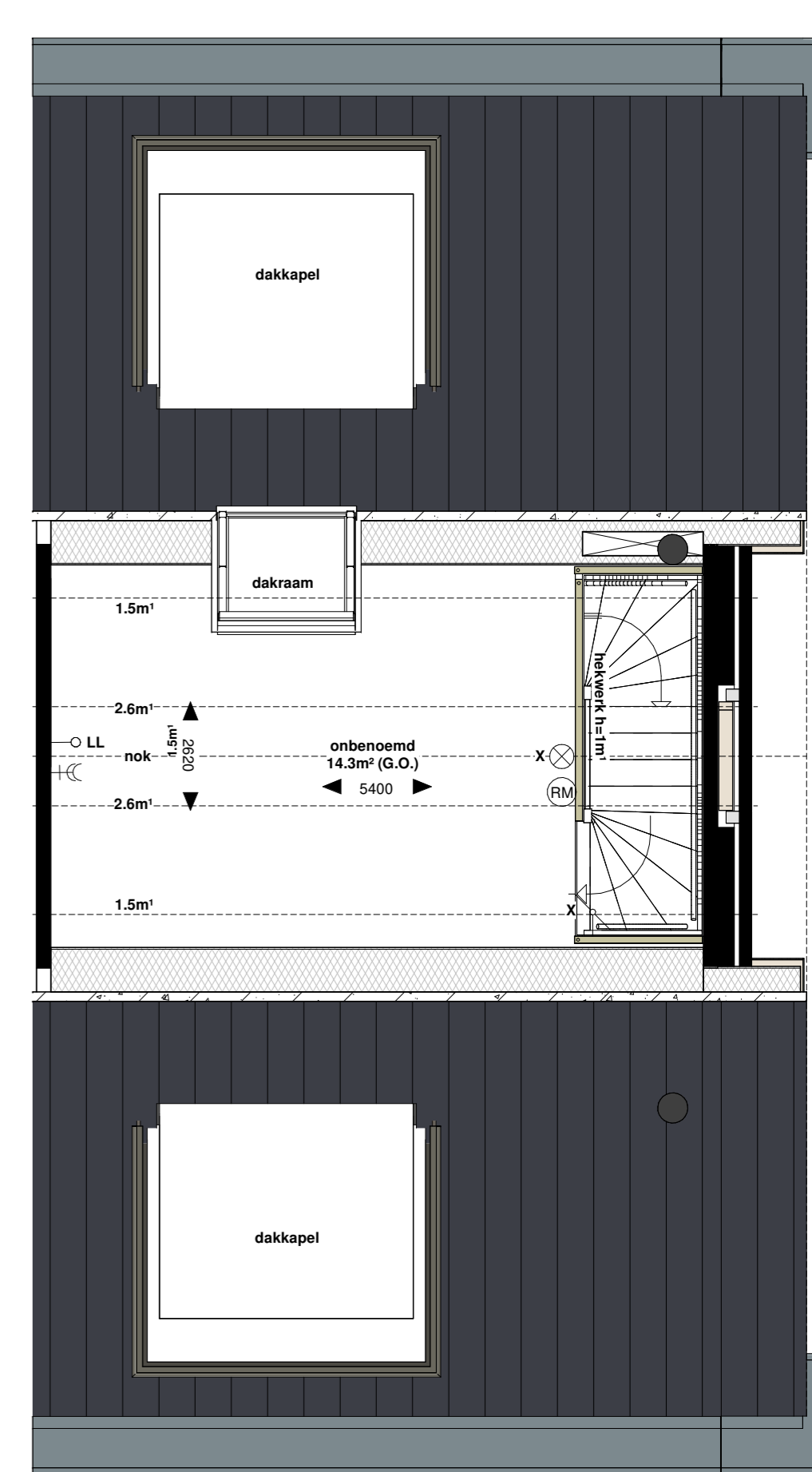
Bnr. 10 - begane grond



Bnr. 10 - 1e verdieping



Bnr. 10 - 2e verdieping

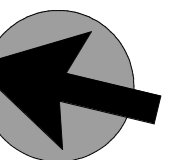


Bnr. 10 - 3e verdieping

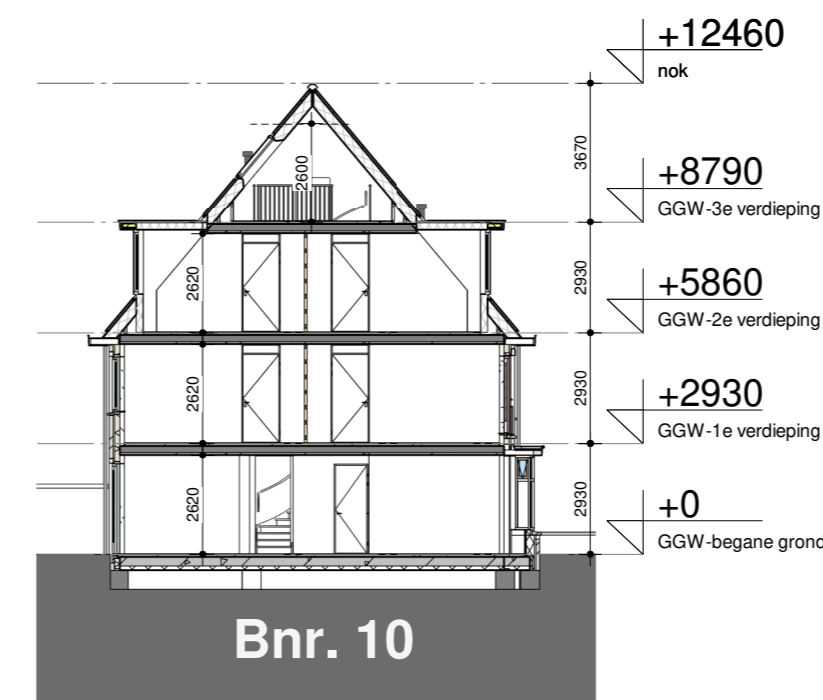
BVO bouwnummer 10

GGW-10 nivo 00	65.4 m²
GGW-10 nivo 00 berging	9.3 m²
GGW-10 nivo 01	63.8 m²
GGW-10 nivo 02	63.8 m²
GGW-10 nivo 03	36.3 m²
Grand total: 5	238.7 m²

GO_{totaal} = 165,3 m²

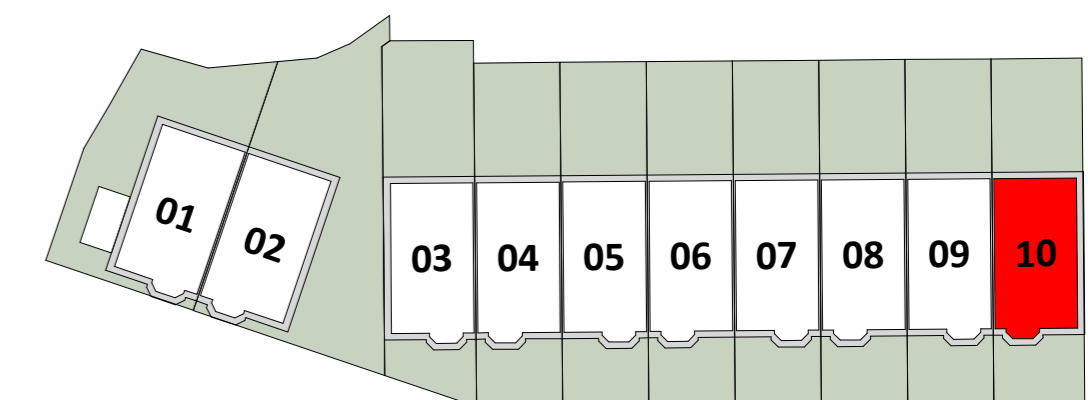


voorgevel (blok B)



Bnr. 10

doorsnede



CONTRACT-TEKENING : BOUWNUMMER 10

VORM **LMA** architecten

werk: Leiden Lammenschansweg
 werknummer: 23944
 datum: 02.03.2026
 gewijzigd: -
 schaal: 1:50 / 1:200
 onderdeel: Grondgebonden woning
 bladnummer: VK_GGW_Bnr_10