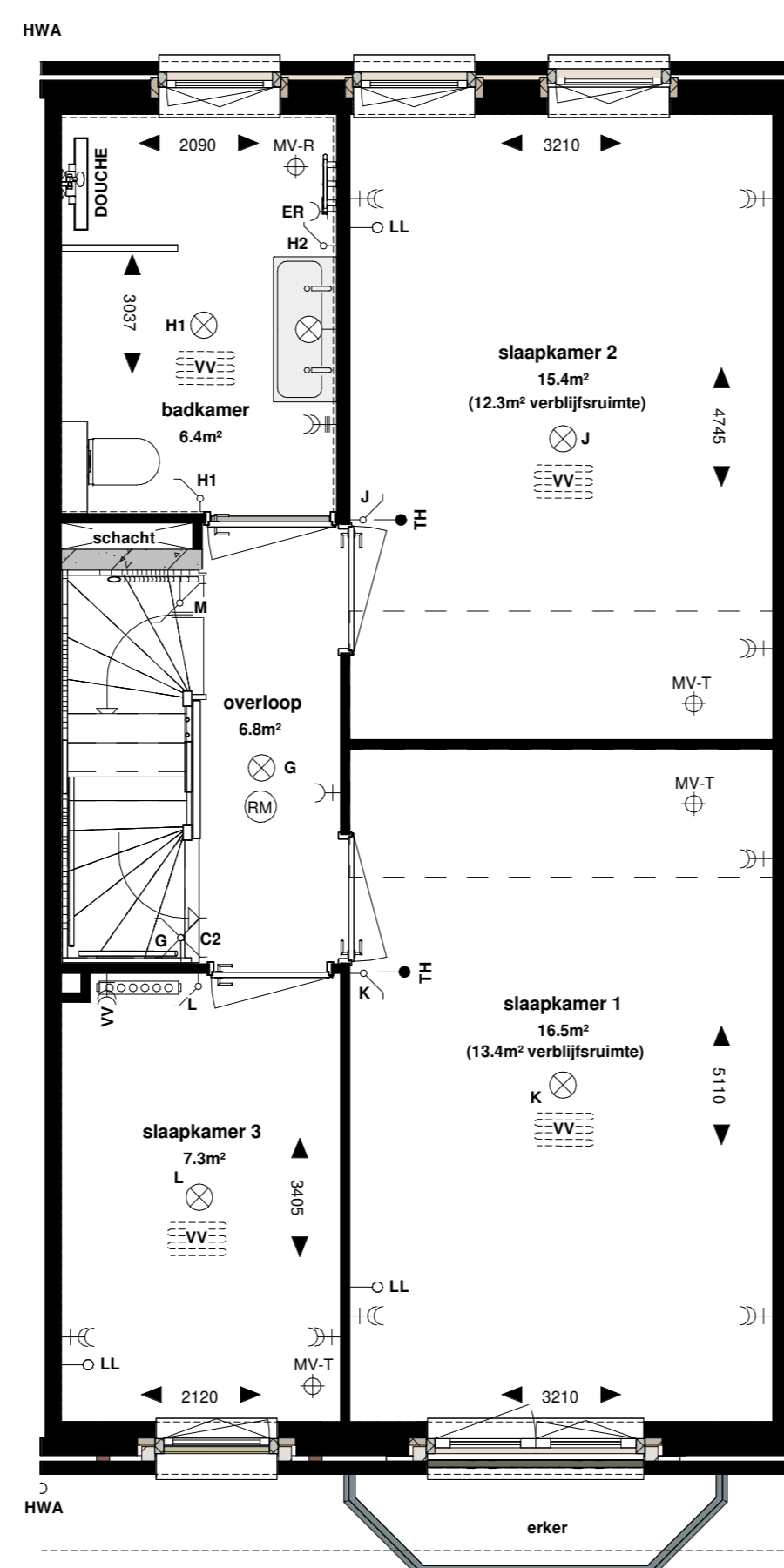
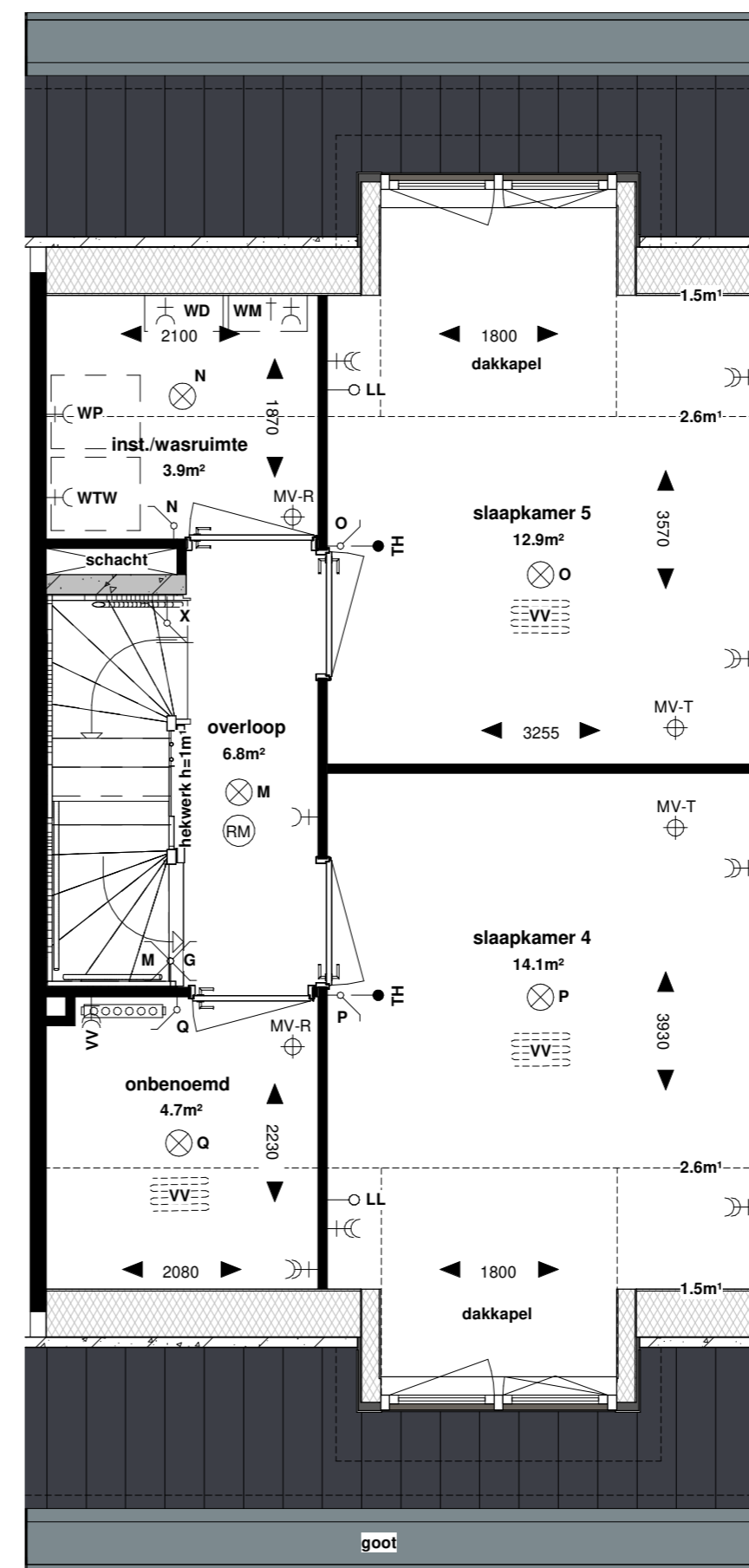


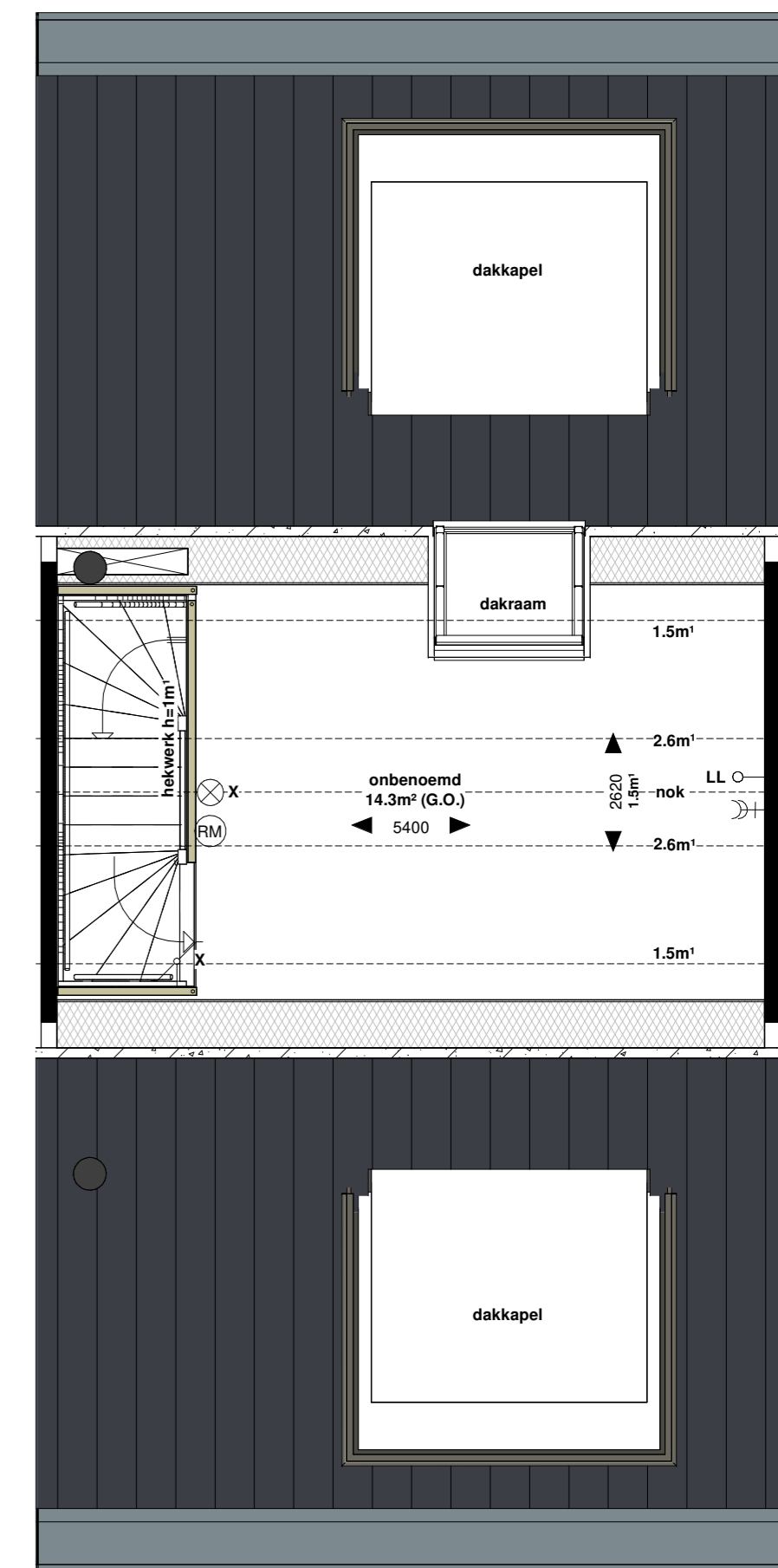
Bnr. 07 - begane grond



Bnr. 07 - 1e verdieping



Bnr. 07 - 2e verdieping

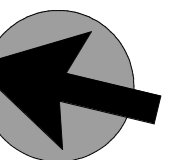


Bnr. 07 - 3e verdieping

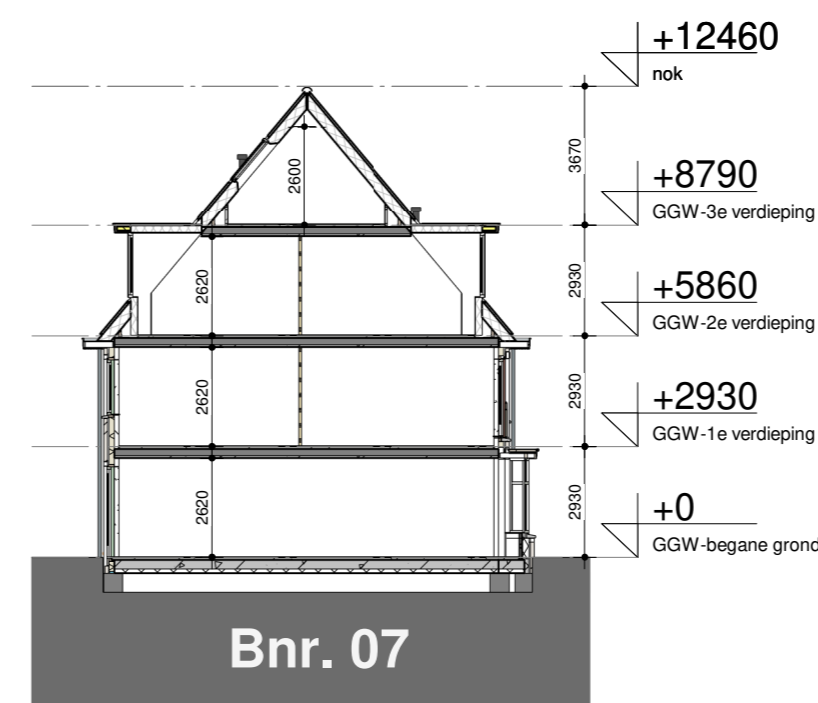
BVO bouwnummer 07

GGW-07	nivo 00	62.7 m²
GGW-07	nivo 00 berging	9.0 m²
GGW-07	nivo 01	61.2 m²
GGW-07	nivo 02	61.2 m²
GGW-07	nivo 03	34.8 m²
Grand total: 5		228.8 m²

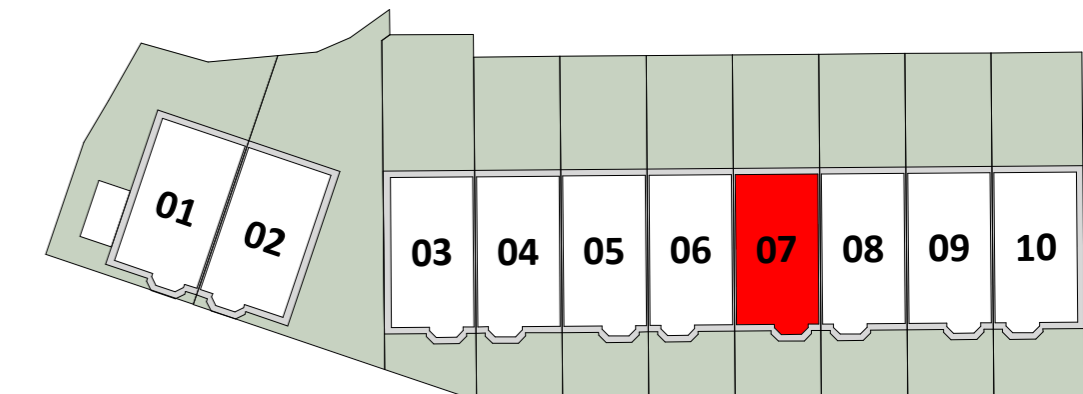
GO_{totaal} = 165,3 m²



voorgevel (blok B)



doorsnede



CONTRACT-TEKENING : BOUWNUMMER 07

VORM **LMA** architecten

werk: Leiden Lammenschansweg
 werknummer: 23944
 datum: 02.03.2026
 gewijzigd: -
 schaal: 1:50 / 1:200
 onderdeel: Grondgebonden woning
 bladnummer: VK_GGW_Bnr_07