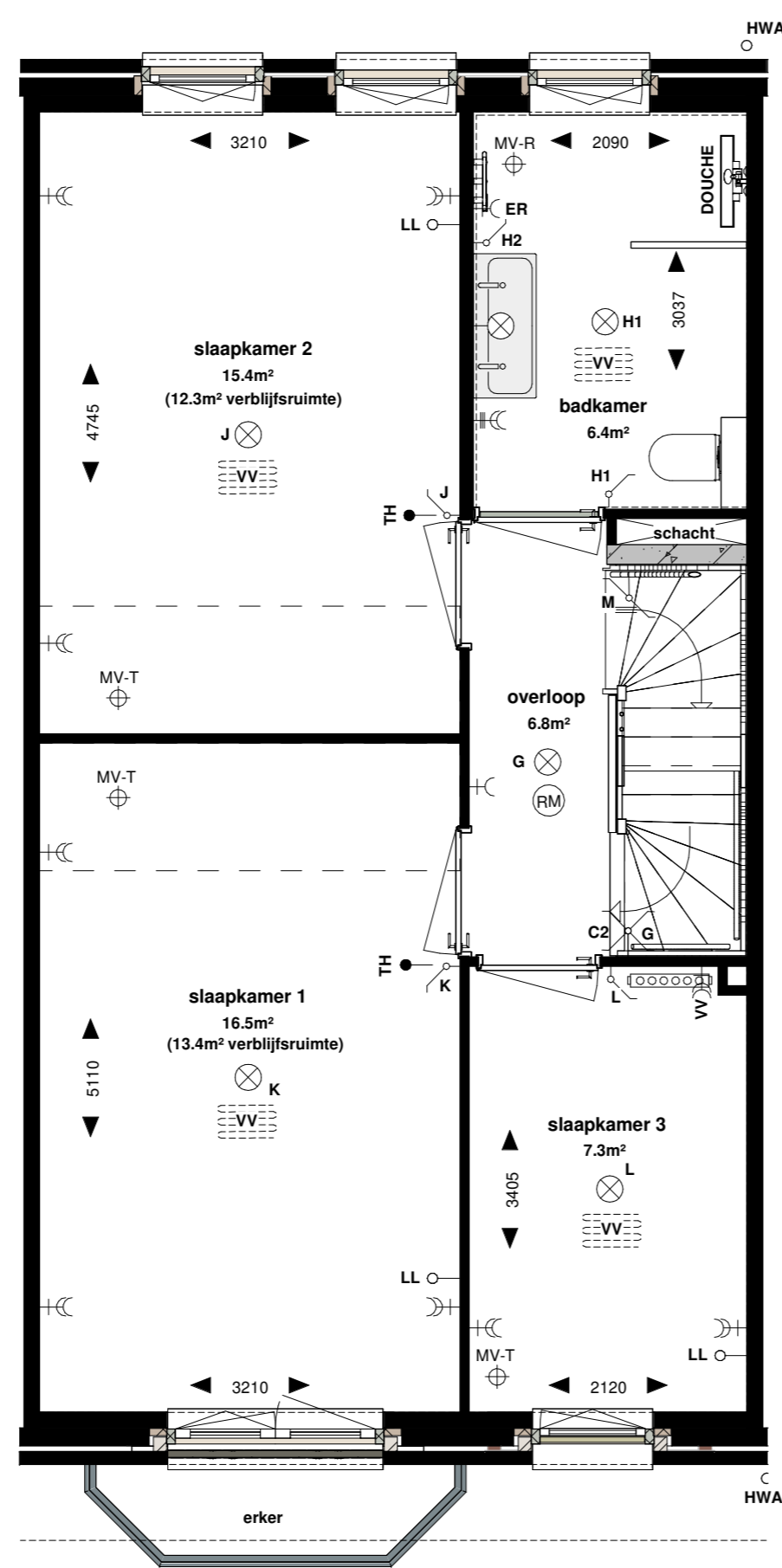
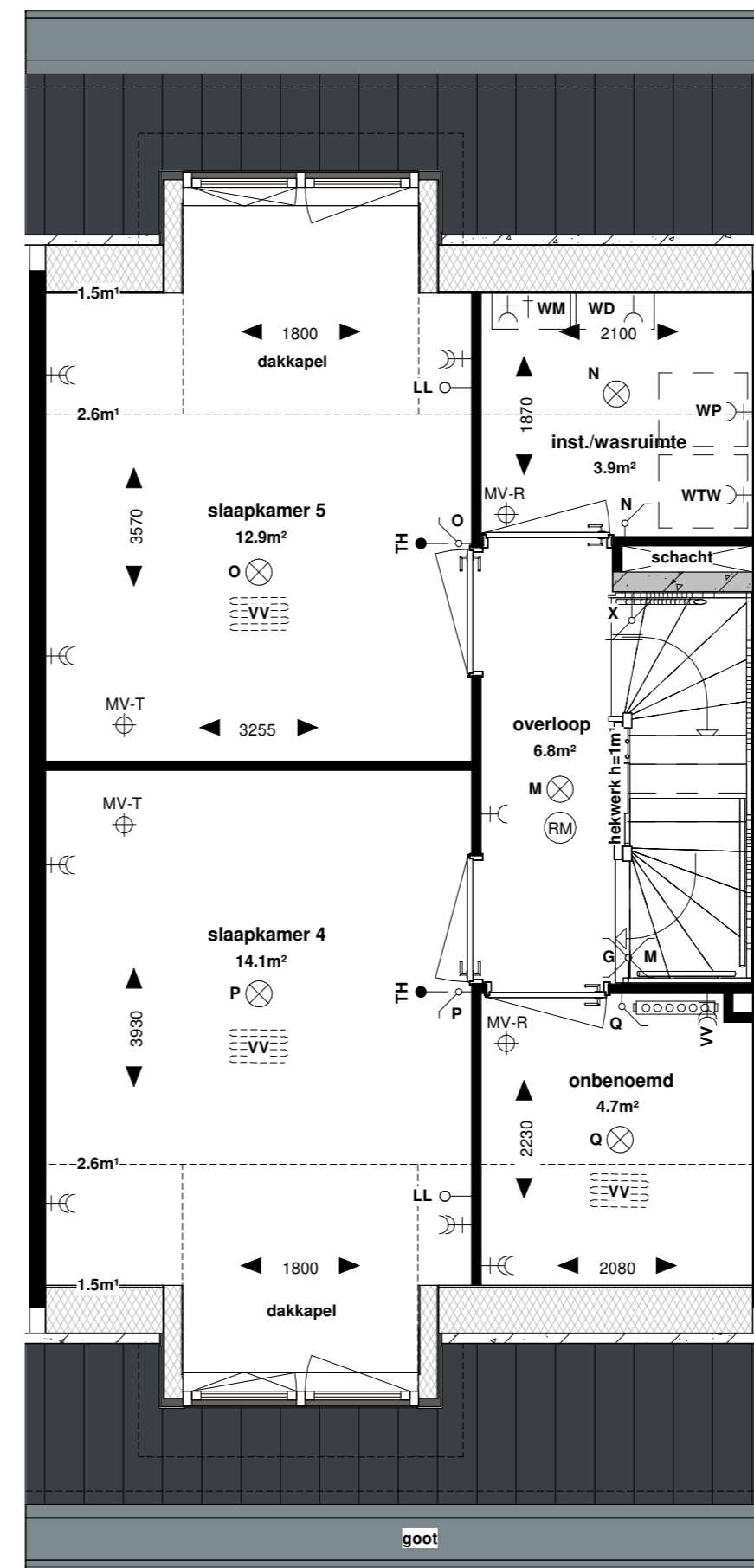


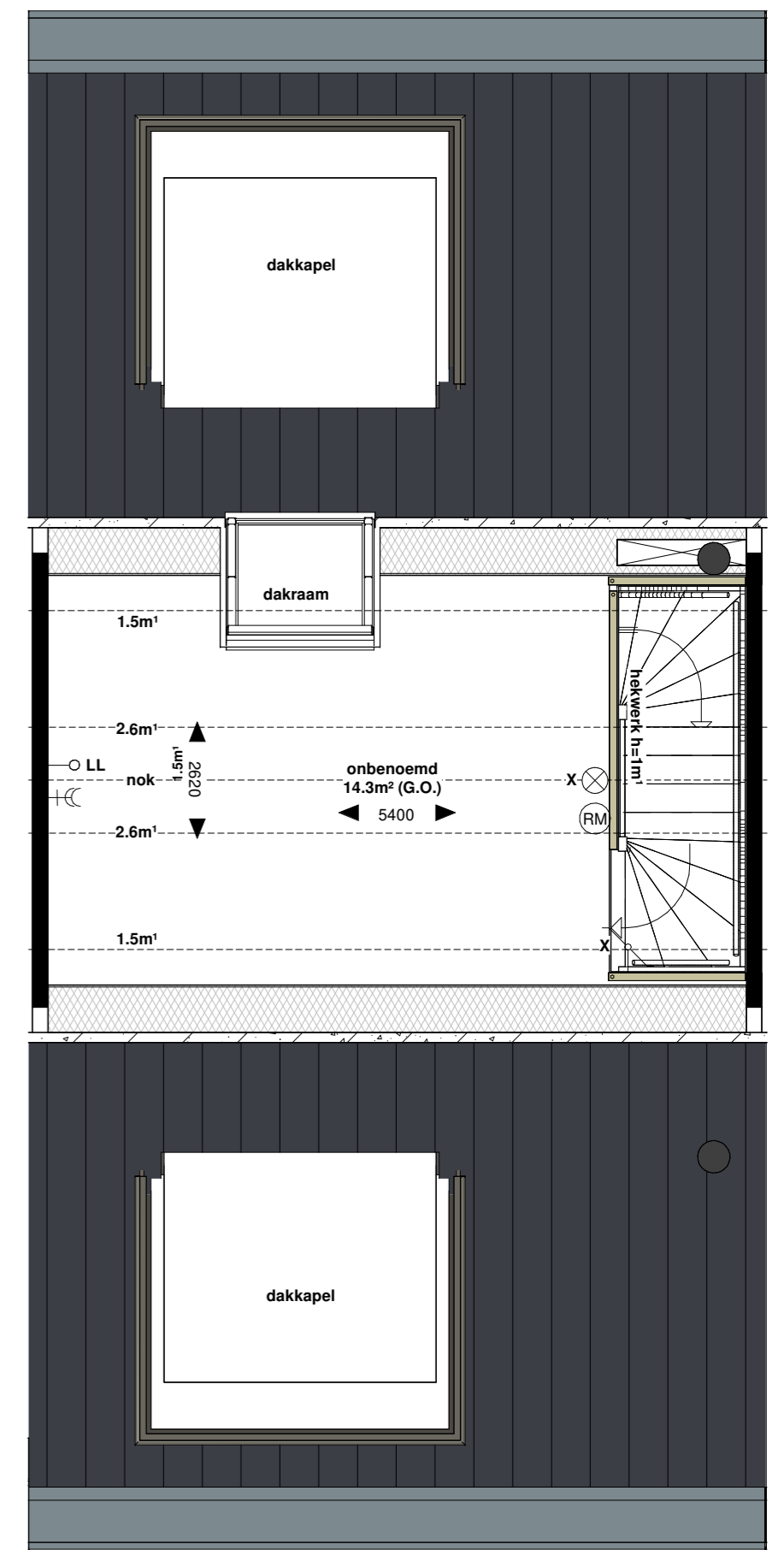
Bnr. 06 - begane grond



Bnr. 06 - 1e verdieping



Bnr. 06 - 2e verdieping

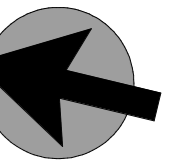


Bnr. 06 - 3e verdieping

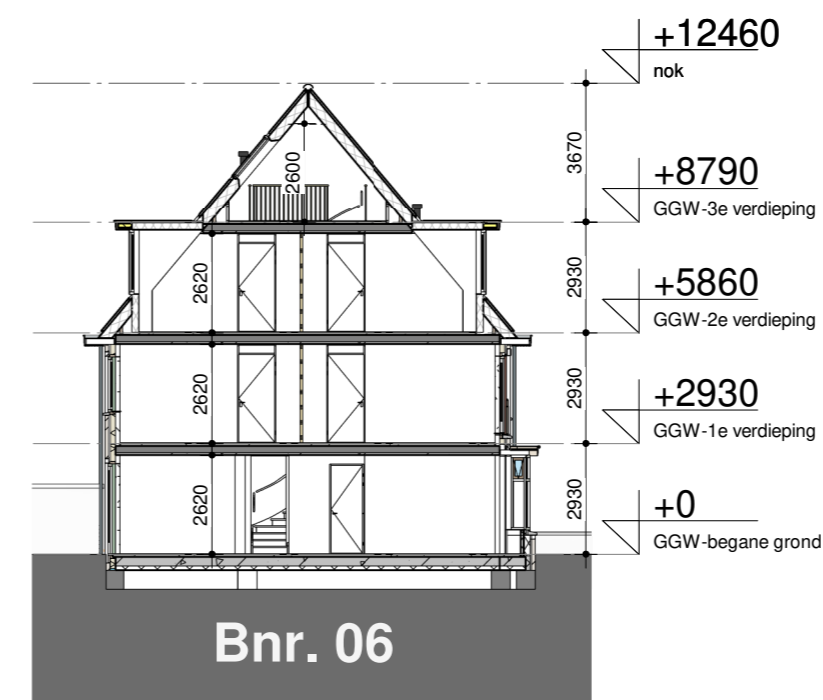
BVO bouwnummer 06

GGW-06	nivo 00	62.7 m²
GGW-06	nivo 00 berging	14.8 m²
GGW-06	nivo 01	61.2 m²
GGW-06	nivo 02	61.2 m²
GGW-06	nivo 03	34.8 m²
Grand total:	5	234.6 m²

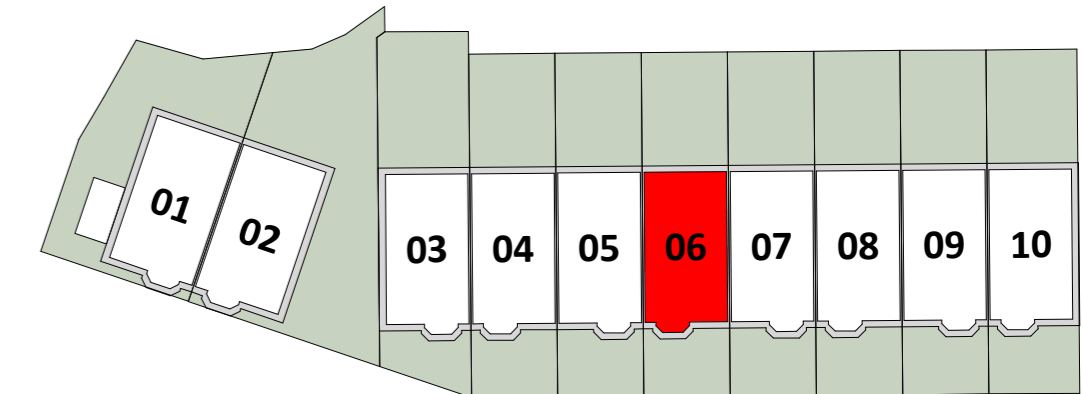
GO<sub>totaal</sub> = 165,3 m²



voorgevel (blok B)



doorsnede



CONTRACT-TEKENING : BOUWNUMMER 06

**VORM** **LMA** architecten

werk: Leiden Lammenschansweg  
 werknummer: 23944  
 datum: 02.03.2026  
 gewijzigd: -  
 schaal: 1:50 / 1:200  
 onderdeel: Grondgebonden woning  
 bladnummer: VK\_GGW\_Bnr\_06